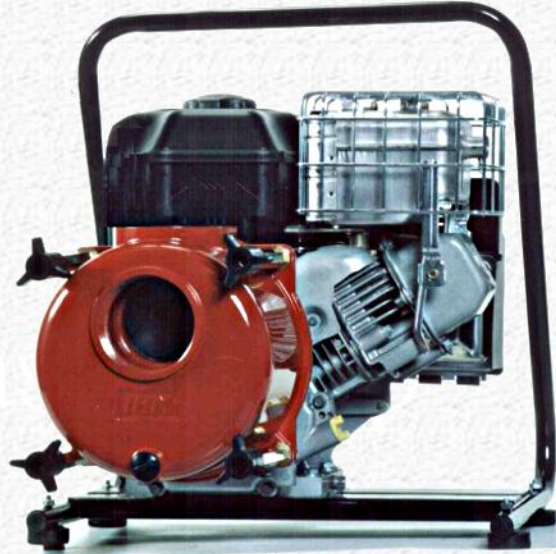


Duralum Trash Series

Engine Driven Self Priming Pumps- Die Cast Aluminum



U.S. Fluid Tech Corp.

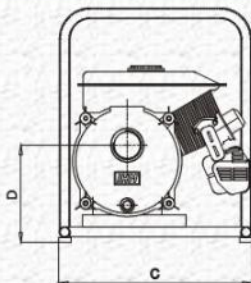
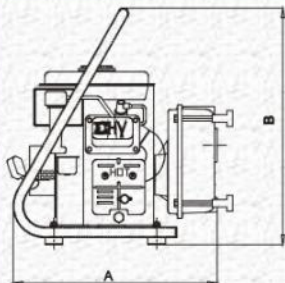
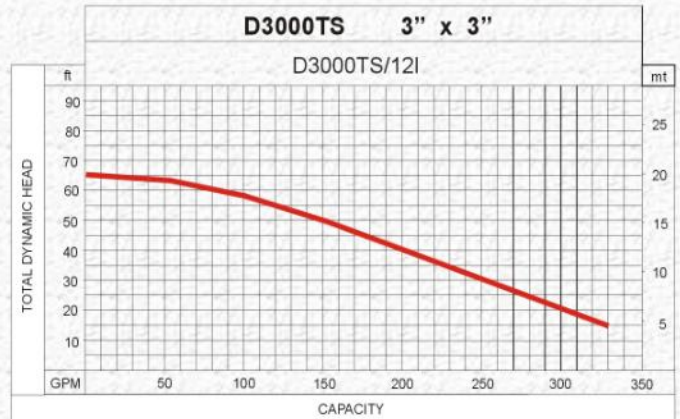
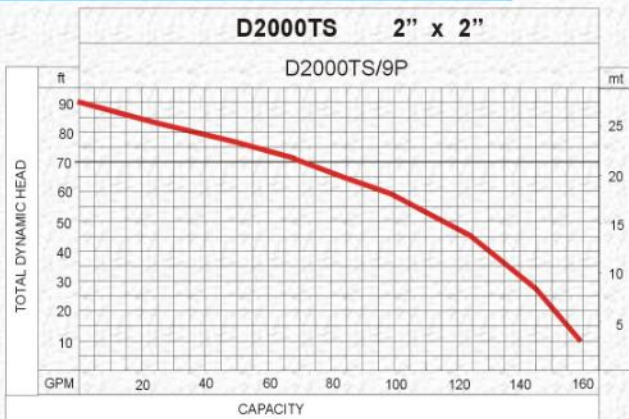
- ✓ Case and back plate, are die cast aluminum construction.
- ✓ Epoxy coated, inside and out.
- ✓ Impeller and volute are gray iron construction.
- ✓ Carbon-Ceramic and Viton mechanical seal for long life.
- ✓ Very simple to disassemble and reassemble on the job.
- ✓ Portable and easy to move.
- ✓ Very short priming time and high suction lift capability.
- ✓ To drain pools and covers.
- ✓ Briggs and Stratton engine shuts off automatically when oil level is low.
- ✓ Quick start engine.
- ✓ Plastic gas tank for the engine.

2" and 3" Centrifugal, Self Priming

Trash Pumps, Gas Engine

U.S. Fluid Tech Corp.

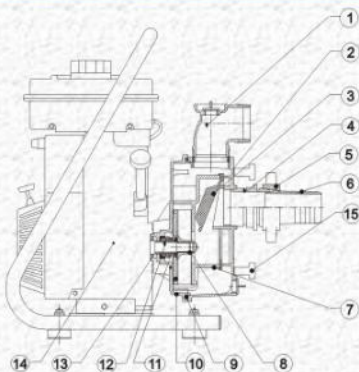
PERFORMANCE CURVES



DIMENSIONS

MODEL	DIAM Suc X Disc	DIMENSIONS (mm)				WEIGHT Lb	ENGINE-HP
		A	B	C	D		
D2000TS/9P	2" x 2"	380	510	410	205	57	3.5
D3000TS/12I	3" x 3"	440	510	410	200	66	6.5

CONSTRUCTION DATA



PUMP CONSTRUCTION DATA				
No	PART	D2000TS MATERIALS	D3000TS MATERIALS	MATERIALS STANDARDS
1*	ELBOW 90	PLASTIC	PLASTIC	POLYPROPYLENE
2	CASING	DIE CAST ALUM.	DIE CAST ALUM.	SC 102a (epoxy coated)
3	CHECK VALVE ASSEMBLY	RUBBER	RUBBER	NEOPRENE
4*	MALE ADAPTER	PLASTIC	PLASTIC	POLYPROPYLENE
5*	GASKET	RUBBER	RUBBER	NEOPRENE
6*	HOSE COUPLER	PLASTIC	PLASTIC	POLYPROPYLENE
7	VOLUTE	CAST IRON	CAST IRON	C.I. A-48 CL 30 (epoxy coated)
8	IMPELLER	CAST IRON	CAST IRON	C.I. A-48 CL 30 (epoxy coated)
9	O-Ring	RUBBER	RUBBER	NEOPRENE
10	BACK PLATE	DIE CAST ALUM.	DIE CAST ALUM.	SC 102a (epoxy coated)
11	MECHANICAL SEAL	TYPE 6 - 3/4"	TYPE 6 - 3/4"	CARB-CER-VITON
12	SHAFT SLEEVE	YELLOW BRASS	YELLOW BRASS	
13	WATER SLINGER	RUBBER	RUBBER	BUNA-N
14	ENGINE	GASOLINE 9P	GASOLINE 12I	BRIGGS & STRATTON
15	EXTENDED SCREWS	PLASTIC /BRASS	PLASTIC /BRASS	PLASTIC /BRASS

* not supplied

Centrifugal, Self-Priming

D2000TS/9P-2"x2"- 3.5 HP

D3000TS/12I-3"x3"- 6.5 HP