

# CRAFTING WITH LUNDBY

## DECEMBER 2009

by CAROLYN FRANK

### ACCESSORIES FOR THE LUNDBY HOME PART SIXTEEN: CHRISTMAS DÉCOR IV; HOLIDAY FEAST; MEMBERS' LINKS & TIPS

Our *Candy Cane Theme* (December/2007) returns with a Christmas Stocking, Potholder, and Guest Towel. Jennifer McKendry, CAN, has graciously provided the 2010 Lundby Calendar.

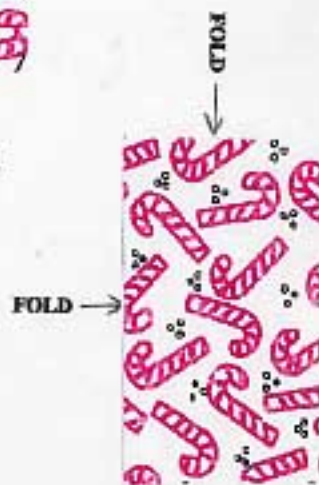
Directions for the projects are on page 2.



CHRISTMAS  
STOCKING



POTHOLDER



GUEST TOWEL



2010 LUNDBY  
CALENDAR

## DIRECTIONS FOR CHRISTMAS PROJECTS

*Note: The graphics on page 1 may be used as printed/photocopied, or they may be transferred to printer fabric (check [www.google.com](http://www.google.com) and sewing/art supply stores for the product).*

### CHRISTMAS STOCKING

**MATERIALS:** Graphic; Sharp Scissors; Tacky-type Glue; Toothpick; Red Embroidery Floss (a few strands).

1. Print/photocopy page 1. *Carefully* cut-out the **Christmas Stocking**.
2. Fold the **Stocking** in one-half, *vertically*.
3. Apply a "bead" of glue to the outside edges of the **Stocking**.
4. Lightly press the glued edges together.
5. Insert the Toothpick into the **Stocking** before the glue sets so it will be functional. *Let dry thoroughly*.
6. Fold a 1<sup>7</sup>/<sub>2</sub>cm strand of Embroidery Floss in one-half to make a Hanging Loop. Glue the Loop to the upper edge of the **Stocking**. The Loop should extend 1/4"/6.35mm above the upper edge.
7. The **Stocking** may be embellished by gluing Floss around the outside edges. Hang on the Lundby fireplace.

### POTHOLDER

**MATERIALS:** Graphic; Sharp Scissors; Tacky-type Glue; Red Embroidery Floss.

1. Print/photocopy page 1 for each **Potholder** desired and *carefully* cut-out.
2. Fold the **Potholder** in one-half, *vertically*.
3. Refer to #6 above, substituting **Potholder** for **Stocking**, and make a Hanging Loop.
4. Apply a "bead" of glue to the outside edges (ascertain that the Hanging Loop is extended). Press edges together. *Let dry*. Place in the Lundby kitchen.

### GUEST TOWEL

**MATERIALS:** Graphic; Sharp Scissors; Tacky-type Glue.

1. Print/photocopy page 1 for each **Guest Towel** desired..
2. Fold the **Towel** in one-half, *vertically*.
3. Apply a "bead" of glue to the outside edges. Press edges together. *Let dry*.
4. Fold the **Towel** in one-half, *horizontally*. Hang/place in the Lundby bathroom.

### 2010 LUNDBYCALENDAR

**MATERIALS:** Graphic; Sharp Scissors; Index Card; Double-faced Tape.

1. Print/photocopy page 1 for each **2010 Calendar** desired.
2. Loosely cut around the **CALENDAR** leaving a small margin.
3. Mount on the Index Card with Double-faced Tape. (do not overlap strips).
4. *Carefully* cut-out the **Calendar**. Hang on a wall in the Lundby dollhouse.



## HOLIDAY FEAST

The Menu for the **Christmas Dinner** at the Lundby home includes: *Rolled Beef Roast, Crescent Roast Potatoes, Green Beans with Sauteed Mushrooms. Salad, Beverages, and Dessert are left to the creativity of the Members (see the Links section on page 8 for a text on mini food making).*

*Note: The miniature food items on the Menu given above were made from Cold Porcelain Paste (refer to page 7), but other modeling mediums may be used.*

### COLD PORCELAIN PASTE BASICS

**MATERIALS:** Paste; Plastic Plate; Emery Board; Metal Nail File; Paint (of choice).

1. *Pinch* a small portion from the **Paste** mixture for each food item. Ascertain that the remaining mixture is securely sealed in an airtight bag before starting another item.
2. Refer to the dimensions and the painting suggestions given with the instructions for each food item. Shrinkage is very minimal with the **Paste**.
3. Mold the items, using your *clean* hands and, where appropriate, the nail file; Sculpt over a plastic plate. Avoid contact with wooden or paper items.
4. Ascertain that the molded items have hardened before sanding/painting.
5. Refine the molded item by *lightly* sanding with the Emery Board.
6. Allow the painted food item to dry *thoroughly*.

### ROLLED BEEF ROAST

The **Roast** may be made in either *Oven Ready* (uncooked) or *Table Ready* sculpts. It is recommended that the *Oven Ready* model be constructed first to establish the sculpting procedures. The *Table Ready* version is shown below in both an enlargement for detail and in the actual size of the **Roast**. Directions for making the **Roasts** are on pages 4-5.

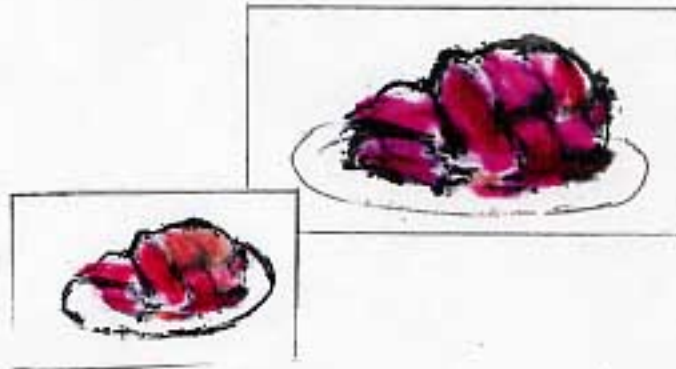


TABLE READY ROAST

## HOLIDAY FEAST (Continued from page 3)

### OVEN READY ROAST

The *Oven Ready* version is appropriate for viewing inside the oven, or it may be placed on an extended oven rack. If your stove/cooker does not have an oven rack (the modern *Stockholm* and *Gotland* houses have racks in their ovens), refer to the *CWL* feature in the September/2008 issue ([www.toysmiles.com](http://www.toysmiles.com)) for directions on making a rack from plastic needlepoint canvas. An alternative to the plastic canvas is to cut a piece of stiff card (1 1/4"/2.5cm, 6.35mm long by 1 1/8"/ 2.5cm, 3.2mm wide) to serve as a rack. Small roasting pans are frequently available through Dollhouse Stores at eBay and miniature shops. A search of household bottle tops and lids may also produce a suitable roasting pan.

**Sculpt Materials:** Cold Porcelain Paste; Buttonhole Twist (dark tan color); Toothpick; Emery Board; Paint (of choice).

**Sculpt Dimensions:** 3/4"/1.9cm long by 1/2"/1.25cm high.

#### Sculpt Directions:

1. Reread the **Cold Porcelain Paste Basics** on page 3.
2. Mold the **Rolled Beef Roast** in a loaf-shape, rounding the top and flattening the ends. Refer to the graphics below.
3. Flatten the bottom of the **Roast**, so it will sit level in the roasting pan.
4. Using the toothpick, while the **Paste** is still moist, draw three or four *fine* lines across the top and sides of the **Roast** to simulate the cording. Refer to the graphics below.
5. Let the item dry thoroughly.
6. Sand with the Emery Board (take care not to erase the cording lines) , if needed.
7. Wrap the buttonhole twist around the cording lines (#4 above).
8. Paint the top and sides a light beige and the ends a dark burgundy.

*Note: I used oil paint, but other mediums can be used. Carolyn*

OVEN READY ROAST



ENLARGED ROAST



ACTUAL ROAST



## HOLIDAY FEAST (Continued from page 4)

### TABLE READY ROAST

The *Table Ready* version, pictured on page 3, may be placed on either the dining table or a serving table/cart. Lundby in its Småland line has an attractive set (#60.5071) of dishes, goblets, and silverware. Chrysnbon also has a nice service for four (#22112) in kit form. The dinner plate in the Chrysnbon set is rather large for 1/16<sup>th</sup> scale, however, the other pieces are suitable.

*Note: I found an oval insert in a cold cream container that made an excellent serving platter. You may find something similar by checking your household items. Carolyn*

Sculpt Materials: same as on page 4 with the additions of a metal nail file.

Sculpt Dimensions: same as given on page 4.

#### Sculpt Directions:

1. Reread the **Cold Porcelain Paste Basics** on page 3.
2. Follow the directions, #1-4, on page 4 for the *Oven Ready Roast*.
3. If you prefer a "carved" model, cut two slices with a metal nail file.
4. Follow the directions, #5-8, on page 4 for the *Oven Ready* version.
5. Paint the interior of the **Roast** and the slices a burgundy color for *rare* or dark beige for *well done*.
6. Position on a platter.

### **CRESCENT ROAST POTATOES GREEN BEANS WITH SAUTEED MUSHROOMS**

The directions for making the "Sides" are on page 6. They are similar and require the same materials. The **Roast Potatoes** and the **Green Beans/Mushrooms** can be displayed in a bowl or on a plate. Pictured below are the **Potatoes** in a bowl.

*Note: I used the lids of Aleve (travel-size) containers for the bowls. The lids/bowls are 3/4"/1.9cm in diameter. Carolyn*



ENLARGED



ACTUAL

CRESCENT  
ROAST POTATOES

## HOLIDAY FEAST (Continued from page 5)

Small food items, such as table-ready vegetables, muffins and biscuits, can be formed by flattening the mixture by hand or with a rolling implement.

**Sculpt Materials:** Cold Porcelain Paste; plastic plates; rolling implement, i.e., dowel stick, mini rolling pin, palm of hand; metal nail file; paint (as desired).

**Sculpt Dimensions:** **Crescent Roast Potatoes** – 3/8"/9.5mm in length; **Green Beans** – scant 3/8"/9.5mm in length; **Mushrooms** scant 1/4"/6.35mm.

### Sculpt Directions:

1. Determine how many of each vegetable you wish to make.
2. Pinch/cut only the needed amount of the **Paste** for the desired number of each vegetable. Use a separate plastic plate for each group of vegetables molded.  
*Note: Mushrooms, of course, are a fungi, but they are frequently classified with vegetables.*
3. Working over a plastic plate, flatten the mixture with either the rolling implement or the palm of your hand. The *depth* of the mixture should be a scant 1/4"/6.35mm.
4. Refer to the graphics below for suggested shapes of the vegetables.
5. Pinch a small piece of the mixture and mold each of the selected vegetables by hand, or "drawing" the shape with the metal nail file on the mixture.
6. Using the hand method, place each vegetable on the plate to dry.
7. Using the "drawing" method, cut the shape with the sharp end of the file, remove the excess **Paste** around the cut shape. Do NOT pick-up the cut vegetable, as it may crumble. Flatten, the mixture, if needed, and continue cutting the vegetables.
8. Do not worry if your molded vegetables are not totally the same size, as home-cooked vegetables often vary in depth and length.
9. Allow the vegetables to dry thoroughly.
10. **Painting Suggestions:** **Potatoes:** golden brown (if you prefer, "skins," a dark brown on the outer edges); **Green Beans:** medium green; **Mushrooms:** grey-brown.

*Note: I used oil paint on the prototypes, however, acrylics would serve as well. The sautéed simulation was achieved by slightly diluting yellow watercolor paint and drizzling over the mushrooms. Carolyn*



CRESCENT  
POTATO



GREEN  
BEAN



MUSHROOM

VEGETABLES SHOWN  
ACTUAL SIZE



## HOLIDAY FEAST (Continued from page 6)

There are various mediums available for crafters to model miniatures, i.e. polymer clay, bread dough, resin, wax. An interesting alternative to these methods is **Cold Porcelain Paste**. The mini food items on pages 3-6 were made using the **Paste**. Many of the supplies for the **Paste** may be found in the home kitchen or from local sources.

**Caution:** The **Paste** is meant for modeling by adults and not suitable for use by children. The mixture must be kept in an airtight bag to prevent possible odors and spoilage.

### COLD PORCELAIN PASTE DIRECTIONS

*Note: There are various "recipes" and tutorials for Cold Porcelain Paste at [www.google.com](http://www.google.com) that you may wish to study. There are also pre-mixes, molds, and sculpting tools available from art/craft suppliers and online. The **Paste** made from the ingredients listed below will produce a batch sufficient for the **Holiday Feast**. If kept in an airtight bag, the modeling material will remain soft and pliable. Akin to real porcelain, dried items are breakable, so care must be given in handling.*

Small saucepan (preferably inexpensive or used)

Spatula, heat-resistant (preferably silicone-type)

Measuring Implement

Plastic Plate

Airtight Bag

4 Tablespoons/60ml Cornstarch (*corn flour* in the UK and other countries)

4 Tablespoons/60ml Baking Soda (bicarbonate of soda)

4 Tablespoons/60ml Water (lukewarm to touch)

1/8 teaspoon formaldehyde (preventative for insect-infestation)

Paint (oils, acrylics, water colors, food coloring)

1. Place ingredients, as given in the order above, in the Saucepan.
2. Stir mixture until well-blended with the Spatula.
3. Heat on medium setting, stirring continuously until thickened.
4. Remove from heat, let cool slightly.
5. Pour mixture onto Plate.
6. Knead mixture with hands for a few minutes until firm, but pliable.
7. Place mixture into the Airtight Bag to avoid developing an odor.
8. **DO NOT REFRIGERATE.** The mixture will remain viable for approximately 30-45 days.
9. Immediately clean the Saucepan and Spatula, as the mixture leaves a residue.
10. Let molded items air-dry for a minimum of 24 hours.
11. Refer to pages 3-6 for suggestions on painting the items.

## TIPS FROM MEMBERS

**Nan Cashour, MD**, is one of our Members receiving *The Lundby Letter/ Crafting With Lundby* by mail. When reading the articles, she uses a magnifying glass to enlarge the photographs for detail definition. **Nan** is our own *Sherlock Holmes!*

**Julie Plovnick, VT**, sent us a great site for Lundby spares and parts:  
[http://dockhus.dinstudio.se/gallery\\_76.html](http://dockhus.dinstudio.se/gallery_76.html)

**Julie** has her own site for spares and repairs (great for bashing projects):  
<http://sites.google.com/site/vintagelundby>

Her website is also linked to the *Looking for Lundby?* section of the WLLC site, [www.toysmiles.com](http://www.toysmiles.com).

Members are invited to submit Tips/Links to *Crafting With Lundby* by emailing [scorpio822308@yahoo.com](mailto:scorpio822308@yahoo.com) or by writing to Carolyn Frank, 1009 Emerald Drive, Alexandria, VA 22308 USA.

## LINKS

Relating to the article, **Holiday Feast**, on pages 3-6, the website for Hobby Builders Supply has an excellent text available for modeling miniature food items: *Meyer's Homemade Meals*, #012, by Barbara Myers:  
[www.miniatures.com](http://www.miniatures.com)

For readers by mail, the telephone number for Hobby Builders Supply is:  
1-800-926-6464

The mail order/website firm also carries the Chrysnbon Dinnerware Set.

## COMING NEXT

The March/2010 issue will continue the series on the dolls of the Lundby Family. The Mother will be featured. Tips and links will also be given.

Sue and I wish you a very **Happy Holiday Season**.

*Carolyn*