

WELDER™



Micro Impulse Welding

WELDER™

WELDER™

is a micro impulse welding system for dental technical welding jobs. Instead of using a laser ray, Welder™ uses electric energy. The development of Welder™ was carried out with only dental technique in mind

- Away from soldering and on to new technologies with low investments!

Overview of all advantages of welding vs. soldering:

- saving about 80 % of the working time, especially when doing repairs
- exact temperature control in the welding field (ideal for repairs directly next to acrylics or ceramics)
- high stability and flexural strength of the welded objects
- absolutely free of solder using welding wire of material identical to that of the object

- biocompatibility and corrosion-resistant objects
- welding can be done on the master model

Advantages of Welder™ vs. laser welding:

- ca. 70 % lower investment
- very low maintenance costs
- Welder™ results remain unaffected by the object surfaces



Special features of Welder™:

- stereo microscope for very precise welding
- optics shutter offers better protection for your eyes than the conventional LED-shutter
- Argon supply for the production of an ionized and oxide-free atmosphere
- special Argon disperser directly over the welding field
- air pistol for cooling
- Argon gas extractor
- no contact between electrode and object. This is more gentle on electrode and object, speeding up the welding process and producing higher quality
- flushing the closed welding chamber with Argon gas guarantees for perfect welds and keeps the material from embrittlement

Welder™ can connect the following materials:

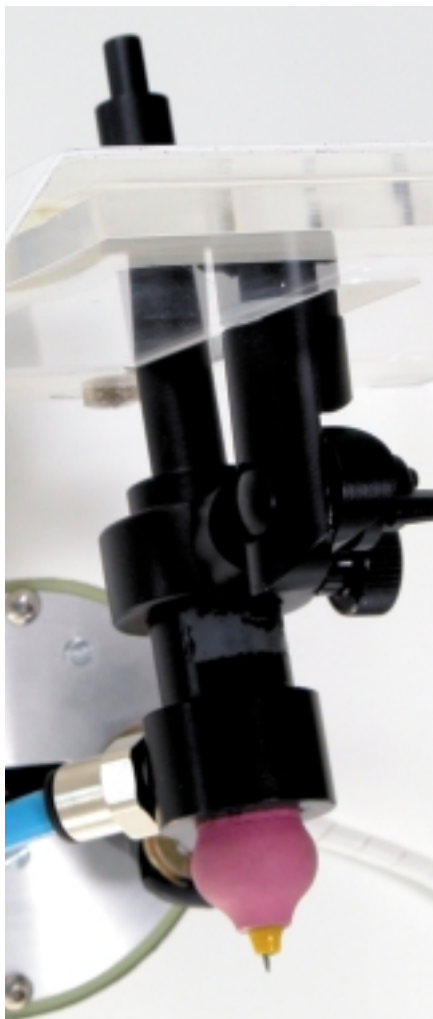
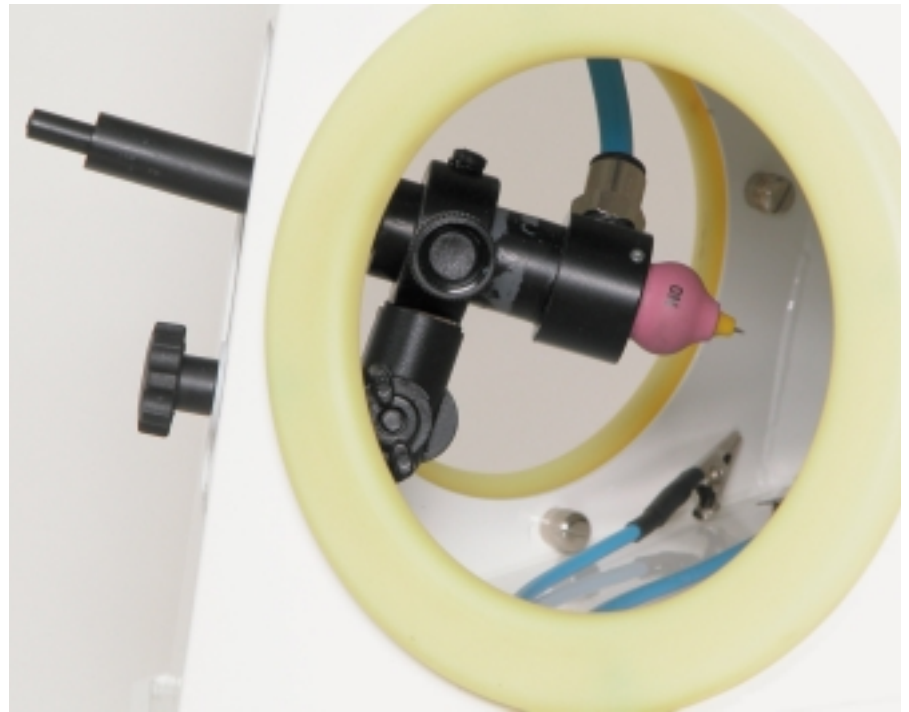
titanium/titanium

non-precious alloy/non-precious alloy

high-precious alloy/high-precious alloy

non-precious alloy/high-precious alloy

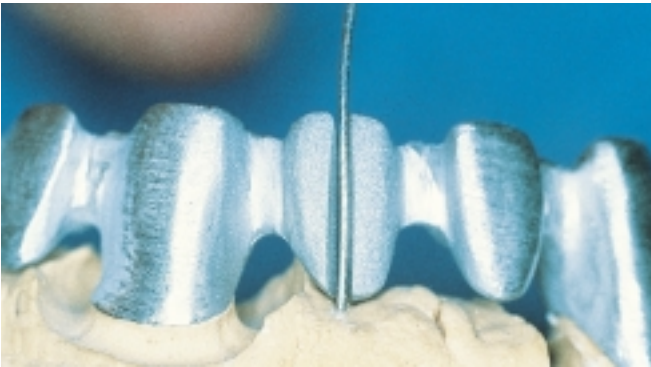
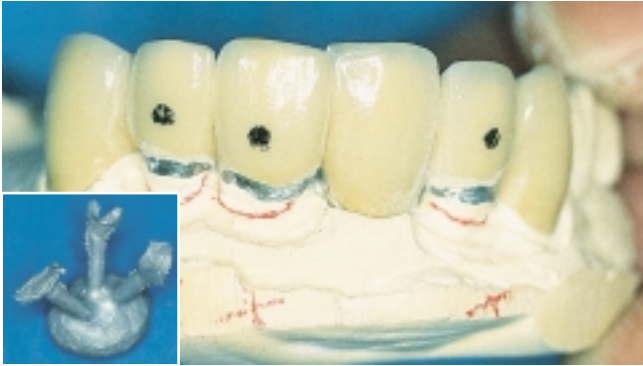
- changing the electrode:
both diameters are quick and easy to exchange



- compact system
- footswitch for single impulse or continuous mode
- angle individually adjustable – for a comfortable working situation
- optimal illumination in the welding chamber, independent from surrounding light situation
- easy handling, low weight and compact measurements: user-friendly
- wide range of indications because of two electrode diameters: 0.5 and 1.0 mm

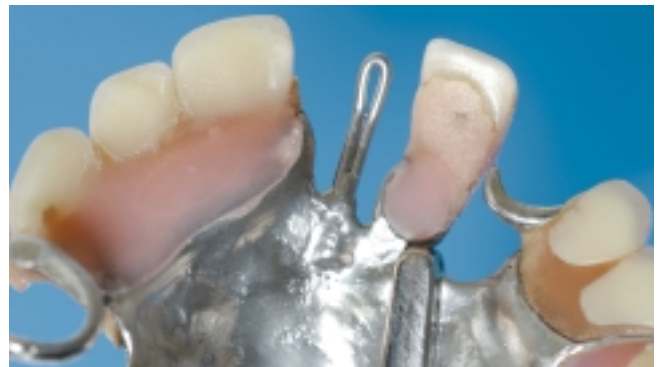
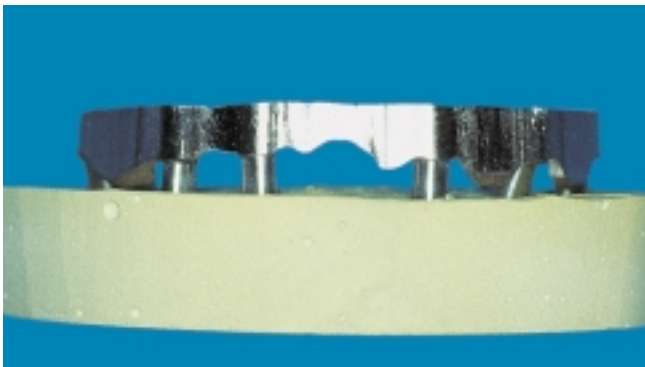
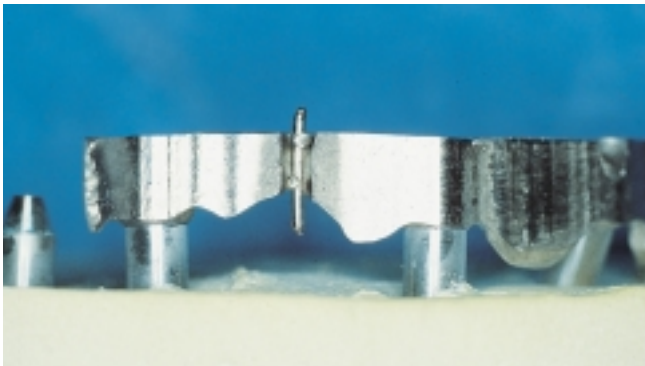
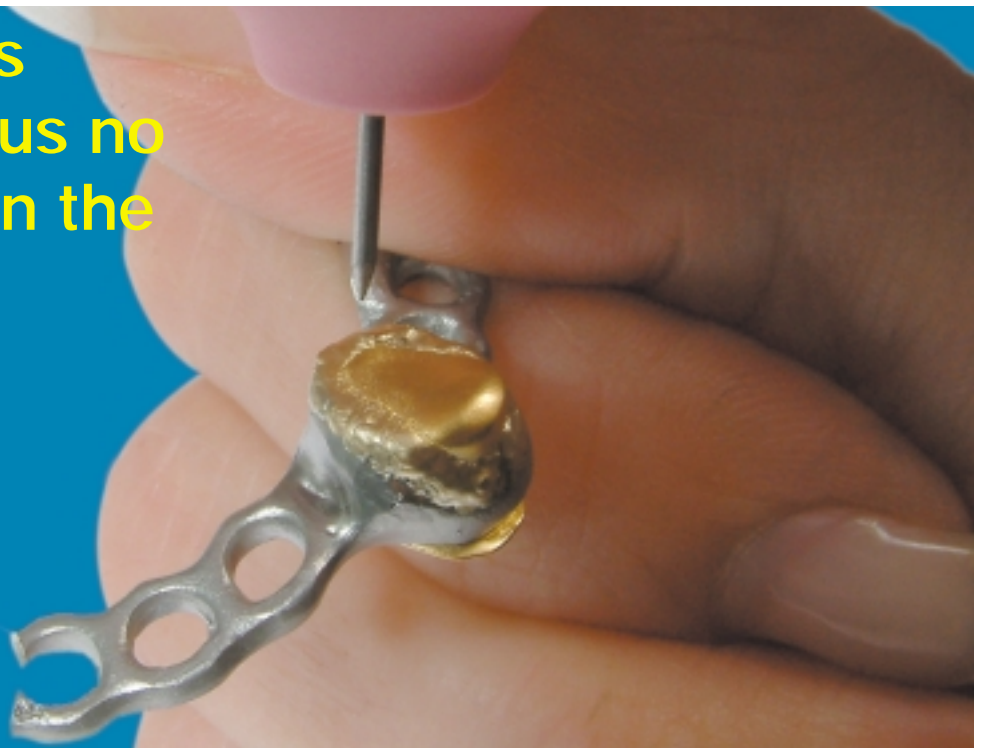


Micro impulse welding



We thank Mr. Martin Heinrichs, Master Dental Technician, Dental Lab de Roy & Wennemann, Bochum/Germany, for his kind cooperation!.

Contactless
welding, thus no
impurities in the
welds!



Technical data *

WELDER™

article number: 670510

width: 39 cm

height: 45 cm

depth: 46 cm

weight: 23 kg

voltage: 230 V

frequency: 50/60 Hz

power consumption: 1000 W

*subject to change

