

CRAFTING WITH LUNDBY

JUNE 2009

by CAROLYN FRANK

ACCESSORIES FOR THE LUNDBY HOME PART FOURTEEN: LUNDBY FAMILY/THE DAUGHTER, CRAFTING TIPS, AND LINKS

Continuing our series of crafting articles on the Lundby Family, the present issue features the **Daughter**. Pictured below is the little girl and her horse (#60.8037) from the *Smaland* line.



THE DAUGHTER OF THE LUNDBY FAMILY

OVERVIEW

THE FIRST FAMILY

In 1974, Lundby introduced a family to inhabit their dollshouse: *Robert*, the father; *Mona*, the mother; *Peter*, the son; *Marie*, the daughter. A baby joined the family in 1978; refer to the *CWL* feature in the March/2009 issue.

The dolls were constructed of a soft vinyl with a flexible framework that allowed them to be posed in lifelike positions. They were non-toxic, and as stated in the catalog, "...there's no need to worry if little brother or sister tries to find out what they taste like."

The sculpt was realistic and the facial features finely detailed. *Mona* and *Marie* had rooted hair (unique, at that time, on dolls so small). *Robert* and *Peter* had painted hair. The clothing reflected the styles of the period, and it was made of actual cloth.

The dolls were a handsome family, however, the wires in the "skeleton" often broke after repeated bending into various poses.



Marie, shown actual size at left, is given as #1140 in the 1974 Lundby catalog. She stands 3 1/2"/8.75cm. Her body is a one-piece sculpt with mold indentations to allow for posing, and her head is removable.

Her rooted, flaxen hair has a middle part, and, with considerable patience, it may be braided.

Her clothing, a striped jumper and knit turtleneck top, is *not* removable. Her red Mary Janes and white knee-length socks are painted.

DOLL FROM PERSONAL COLLECTION OF CAROLYN FRANK

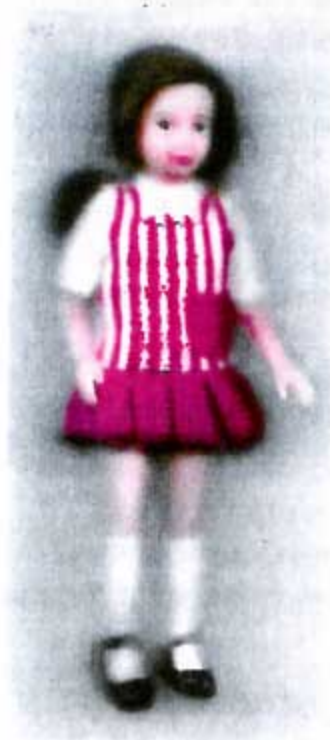
THE DAUGHTER OF THE LUNDBY FAMILY (Continued from page 2)

THE SECOND FAMILY

A new family, with different names, was presented in 1979: *Paul*, the father; *Christine*, the mother; *Patric (or Patrick)*, the son; *Anne*, the daughter. Grandparents, *George and Sophie*, were added to the set.

The sculptors for the dolls were in active production, with periodic updates in clothing and hairstyles, until Lundby entered bankruptcy in 1993. In the 1985 catalog, the family was renamed: *Martin*, the father; *Mary*, the mother; *Tommy*, the son; *Linda*, the daughter; *Albert*, the grandfather; *Ellen*, the grandmother. The dolls were not named in subsequent years.

The dolls were made of a firmer vinyl than the initial family, but they retained the wire framework and rooted hair on the females. The dolls were joined at arms and legs, and some of the adult dolls had swivel waists. It should be noted that the molds were used for the Caroline's Home family when Lundby purchased the line.



Anne, at left, is listed as #1241 in the 1979 catalog. She stands 3 1/4"/7.5cm, 6.35mm. Her vinyl arms and legs pose nicely, but care must be taken when bending the legs, as with the earlier dolls, to avoid breaking the internal wires.

She has delicate, hand-painted features on her soft vinyl face, and her rooted, dark brown hair is styled in a ponytail.

She is wearing a short, drop-waist jumper with a red/white striped bodice and red skirt. There is a petite red pocket on the bodice of the jumper. Her blouse is a white knit. Her black Mary Janes and knee-high socks are painted.

DOLL FROM THE PERSONAL COLLECTION OF CAROLYN FRANK

THE DAUGHTER OF THE LUNDBY FAMILY (Continued from page 4)

THE THIRD FAMILY

Micki Leksaker A/B purchased the Lundby line in 1997, and, shortly thereafter, recreated the dolls to reflect our modern era in appearance and clothing. The new dolls are highly-collectable.

The dolls, made of hard vinyl, encompass the positive details of the earlier sculptures – defined features, rooted hair on the females, jointed arms and legs, and swivel waists. The addition of “ball-jointed knees” has eliminated the problem of wire breakage in the limbs. Micki has also introduced removable clothing on the dolls, and, more recently, boxed sets with dressed dolls and extra outfits. Positioned on a firm surface, the adults and older children can stand by themselves. The dolls are unnamed.

While the molds for the bodies have remained the same, Micki has produced various head sculptures. You can view the dolls in the Lundby catalogs at the website of WLLC member, [Elizabeth Lantz](http://www.swedith-dollshouses.com), www.swedith-dollshouses.com.



The daughter of the Micki/Lundby dolls was not named, but I have designated her, *Samantha*. She is from the Family Group, #60.80.10, as shown in the 2003/2004 catalog. She now resides in my vintage Stockholm house.

Samantha stands 3 1/4"/7.5cm, 6.35mm. Her rooted, auburn hair is below waist-length, and it can be made into a ponytail.

Her rose-colored A-line dress is removable, and it closes with a Velcro-type fastener. She also came with a long-sleeved jacket in a rose/cream floral pattern. Since it is now summer where *Samantha* lives, she has removed it for her photograph at left.

She has painted white panties, white anklets, and black Mary Janes.

DOLL FROM PERSONAL COLLECTION OF CAROLYN FRANK

CRAFTING PROJECTS FOR THE LUNDBY DAUGHTER

SUMMER OUTFIT

Our crafting projects for the June/2009 issue are a *Sun Hat, Dress, and Tote* for the little girl in the Lundby family.

The clothing items are designed primarily for the daughter dolls now in production (*page 4*), however, should replacement garments be needed, they are also sized for the vintage dolls (*pages 2-3*). Only minimal sewing skills and supplies are required for the projects.

The Perforation Paper Technique for stitching the seams of the *Summer Outfit* eliminates the fabric being drawn into the machine's feed dogs – a common problem when sewing for small dolls. Starting with the *Tote* will allow you to quickly perfect the Technique before constructing the *Sun Hat* and *Dress*.

MATERIALS FOR PROJECTS

1/4" yard/23cm cotton fabric, solid color or small all-over print; photocopier or tracing materials; straight pins; sewing machine; iron; 1/4" presser foot; (optional); matching thread for fabric; sharp scissors; point presser or small object with rounded edge; Tacky-type glue; a few strands of embroidery floss (matching or coordinating to fabric).

GENERAL DIRECTIONS

1. Preshrink fabric in hot water. Press.
2. Make photocopies of Boxes A, B, C on pages 10-11.
3. Cut-out the *three Boxes*, taking care to retain the outline (black lines) of the Boxes.
4. Set the Stitch Length on the sewing machine to 2.0.

READ EACH DIRECTION TWICE FOR ACCURACY IN CONSTRUCTION

DIRECTIONS FOR TOTE

A Primary Project

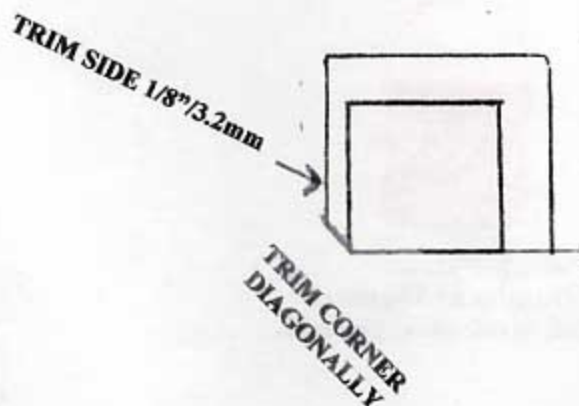


1. Using Box A as a pattern, cut-out *two* fabric pieces.
2. Position the *two* fabric pieces RST (Right Sides Together).
CAUTION: If you are using a print, double-check that RST.

CRAFTING PROJECTS FOR THE LUNDBY DAUGHTER (Continued from page 5)

3. Pin **Box A** on *top* of the fabric pieces, aligning the **Box** with the fabric pieces.
4. Double-check that the stitch length is set at 2.0.
5. Relate to the interior of **Box A**:
the orange square represents the *Tote*;
the 1/4"/6.35mm deep line is the seam allowance for the *Tote*;
the numbers, #1-4, indicate the stitching path;
the straight black line at the is the hemline;
the completed *Tote*, excluding the Handle, is 3/4"/1.9cm long x 3/4"/1.9cm wide.
6. Position **Box A** with the attached fabric pieces under the presser foot, so you may start stitching at #1.
CAUTION:: Do not stitch *above* #1, as this area forms the Upper Hem on the *Tote*.
7. Starting at #1, securely backstitch, and stitch to #2.
8. Leave needle in the Down position, raise the presser foot lever, and pivot the **Box/fabric** in the direction of #3.
9. Stitch to #3.
10. Leave needle in the Down position, raise the presser foot, and pivot the fabric in the direction of #4 on the stitching path.
11. Stitch to #4.
12. Cut on the 1/4"/6.35mm deep line and the straight black line. Refer to graphic below.
13. Carefully remove the printer/tracing paper. Remove paper in small sections to avoid tearing the stitching.
14. Trim seam allowance to 1/8"/3.2mm. Trim diagonally across corners.
Refer to graphic below.
15. Turn to the RS (Right Side).
16. Fold-under the 1/4"/6.35mm tophem.
17. Glue in place. Double-check to ascertain that the *Tote* is functional (Front not glued to Back).
18. Construct the Handle from two or three strands of embroidery floss. Roll the floss with your fingers and dab a bead of glue to hold the strands together. Length of Handle is your choice.
19. Glue the Handle to the interior of the *Tote*.
20. Hang on doll's arm.

INTERIOR OF TOTE



CRAFTING PROJECTS FOR THE LUNDBY DAUGHTER (Continued from page 6)

DIRECTIONS FOR SUN HAT

An Intermediate Project



1. Reread **GENERAL DIRECTIONS** on page 5.
2. Reread **Nos. 1-4** (pages 5-6), substituting **Box B** for **Box A**.
CAUTION: Double-check to ascertain that **Stitch Length** is set at **2.0**.
3. Relate to the interior of **Box B**;
the orange shape represents the *Sun Hat*;
the **1/4"/6.35mm deep black line** is the seam allowance for the *Sun Hat*;
the numbers, #1-2, indicate the stitching path;
the **straight black line** at the lower edge is the hemline;
the completed *Sun Hat*, excluding ties, is **2"/5cm long x 3/4"/1.9cm high** at the apex of the curve.
4. Position **Box B** with the attached fabric pieces under the presser foot, so you can start stitching at #1. Securely backstitch.
5. Continue stitching around the Curve to #2. Securely backstitch.
6. Cut on the **1/4"/6.35mm deep black line** and the **straight black line** (refer to **No. 3** above).
7. Starting at the hemline, trim the seam allowance to **1/8"/3.2mm**. Refer to graphic below.
8. Carefully remove the printer/tracing paper.
9. Trim the seam allowance to **1.8"/3.2mm** (refer to graphic below).
10. Turn the *Sun Hat* to RS (Right Side).
11. Insert the point presser, or other round-edged implement, inside the *Sun Hat*, and gently guide the point presser around the curved edge. Remove the point presser.
12. Press the *Sun Hat*.
13. Fold-under the lower edges (hemline),
14. Make **two 3"/7.5cm** ties from the embroidery floss and glue (or sew) to WS at lower sides of *Hat*.
Glue lower edges together.
15. Put *Sun Hat* on doll and form a bow with the ties; trim ends of ties, if needed.

INTERIOR OF SUN HAT

TRIM SEAM ALLOWANCE



CRAFTING PROJECTS FOR THE LUNDBY DAUGHTER (Continued from page 7)

DIRECTIONS FOR DRESS

An Advanced Project



FRONT



BACK

The *Dress* is an A-line design with a scoop neckline. The construction of the garment uses a variant of the Perforation Paper Yechnique, the Back-Up Paper Perforation Technique. The Bead of Glue Technique is also incorporated.

1. Reread **GENERAL DIRECTIONS** on page 5.
CAUTION: Check to ascertain that the **Stitch Length** is set at **2.0**.
2. Using **Box C** as a pattern, cut *one* fabric piece (*not two* pieces as with the *Tote* and *sun Hat*).
3. Relate to the interior of **Box C**:
the orange shape represents the *Dress* pattern;
the 1/4"/6.35mm deep black lines represent the seam allowances for the Side/Back Seams;
the numbers, #1-4, indicate the stitching path;
the markings for the "shoulder seams" (the shoulder seams in a real-life garment);
the markings for the Armhole Openings (the armseyes in a real-life garment);
the Separation Line for Back Seam.
the length of the *Dress*, at shoulder, is $1\frac{1}{2}"/3.75\text{cm}$ and the width, at hemline, is $1\frac{5}{8}"/4..10\text{cm}$.
4. Open the Separation Line for the Back Seam (*relate to the markings on the pattern*).
5. Cut-out the *Dress*. *Carefully* cut around the neckline. Do NOT cut the Shoulder Markings.
6. Remove the printer/tracing paper.
7. Using a straight pin, or a small skewer, apply a Bead of Glue (thin line of glue) to each of the Armhole Openings on the WS (Wrong Side) of the *Dress*.
8. Turn-under 1/8"/3.2mm at each Armhole Opening to form a facing.
Crafter's Tip: You may wish to practice the Bead of Glue Technique on a scrap of fabric.
9. Apply a Bead of Glue to the neckline. Turn under a scant 1/16"/1.6mm, rotating the fabric as you glue. Before the glue sets, check to ascertain the "shoulder markings" are identical in width – approximately 1/4"/6.35mm.
10. Cut a strip of paper, approximately 2"/5cm long x 1"/2..5cm wide.
11. Position the fabric pieces (Back Seam) together. Place the strip of paper *under* the fabric (the Back-Up Perforation Technique).
12. Stitch the Back Seam to the marking on the pattern.

CRAFTING PROJECTS FOR THE LUNDBY DAUGHTER (Continued from page 8)

Crafting Tip: Using a 1/4"/6.35mm presser foot, available from sewing outlets, is very helpful in stitching small seams.

13. Remove the paper in small sections to avoid tearing the stitching.
14. Insert the pointed edge of the point presser to open the seam. Press with iron. Fold-under the area *above* the stitched Back Seam and glue.
15. Cut *two* more strips of paper (refer to #10, page 8).
16. Turn *Dress* to WS. Fold *Dress* in one-half at the Shoulder Markings. Line-up the seam allowances to form the 1/4"/6.35mm Side Seams.
16. Insert one of the strips *under* one of the Side Seams. Starting at #1, stitch to #2.
17. Stitch the other Side Seam (#3 to #4). Open the Side Seams with the point presser.
18. Double-check that the Back Seam and Side Seams are securely backstitched at both ends of the seams.
19. Fold-under the 1/4"/6.35mm hem and glue. Turn the *Dress* to the RS.
20. Fasten the Back with ties made from the embroidery floss, or use a small *dot* of Velcro.

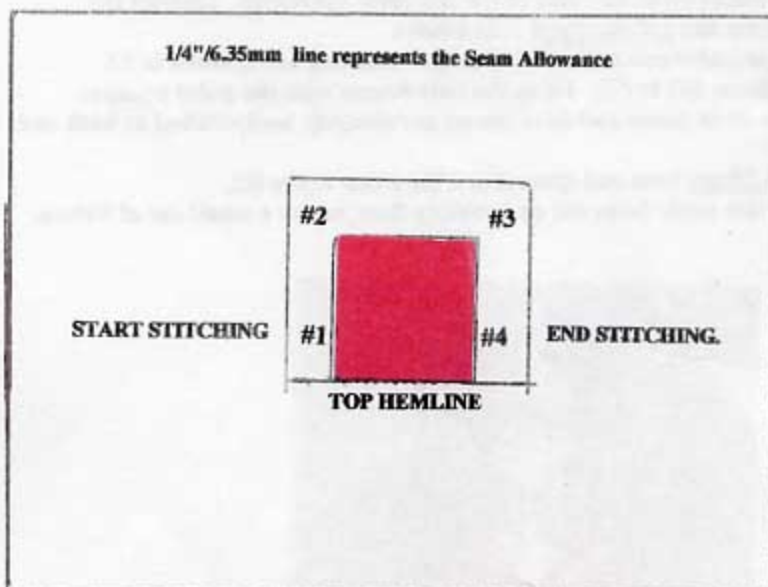


SAMANTHA
IN HER
SUMMER OUTFIT

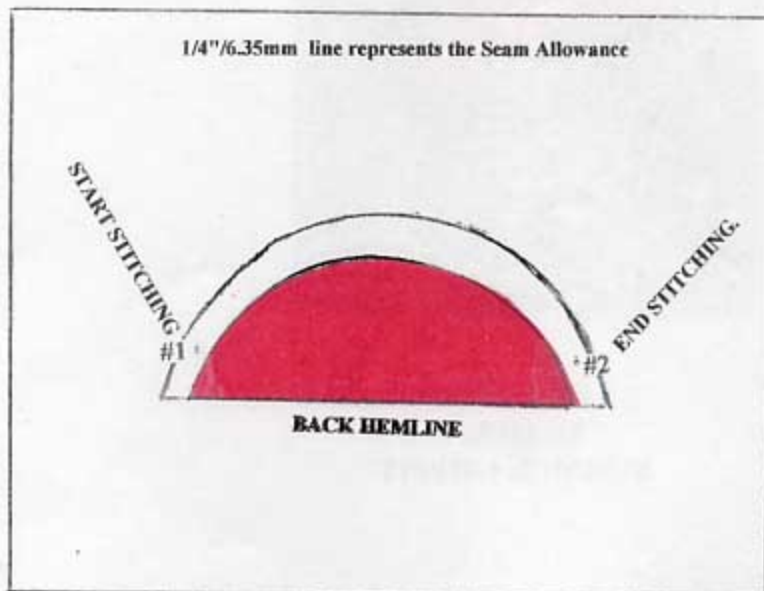
CRAFTING PROJECTS FOR THE LUNDBY DAUGHTER (Continued from page 9)

DIRECTIONS FOR BOXES

1. Make a photocopy of Boxes A-B on the present page and Box C on page 11.
2. Cut-out the Boxes from the photocopies, retaining the outline (black lines).
Please note that the Boxes are placed on top of the fabric.



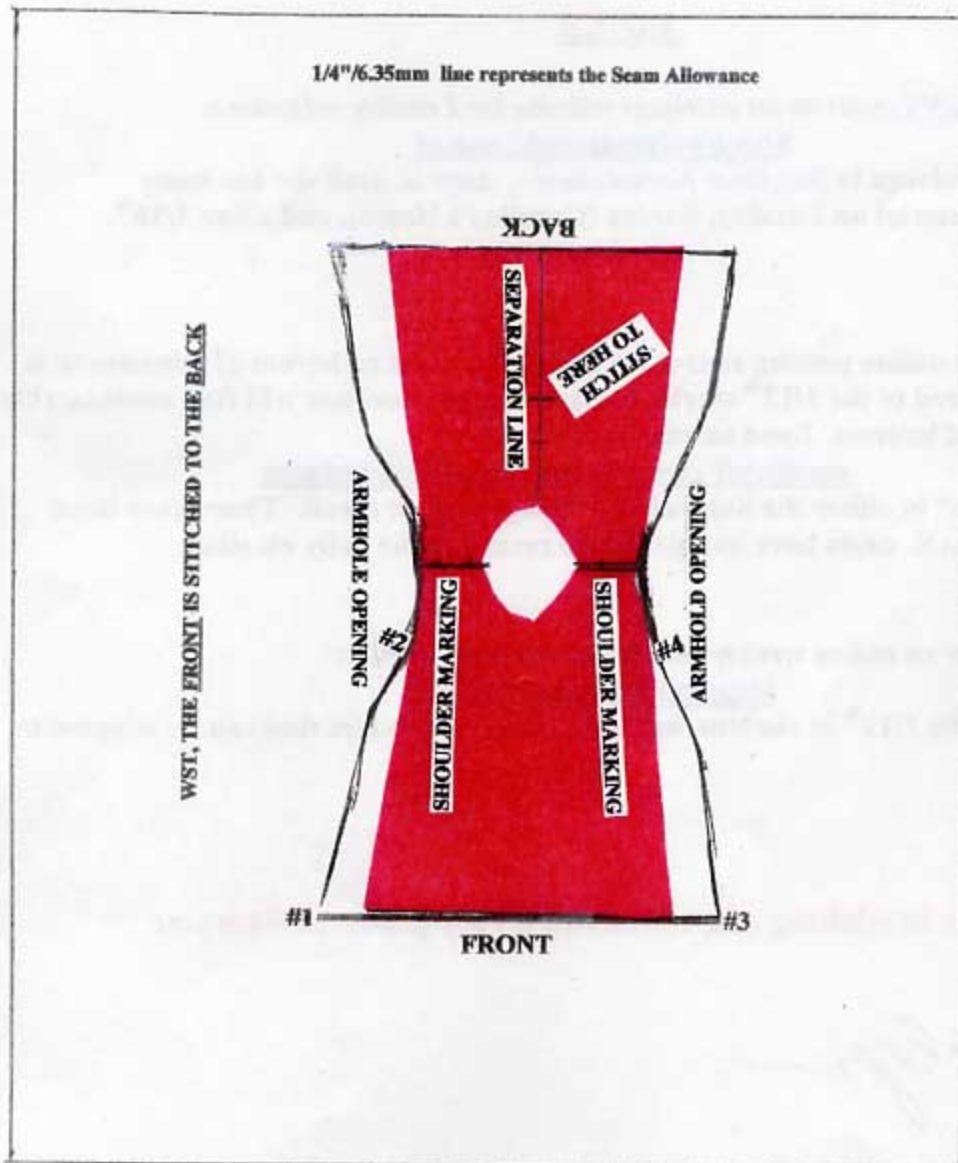
BOX A/TOTE
REFER TO PAGES 5-6



BOX B/SUN HAT
REFER TO PAGES 7-8

CRAFTING PROJECTS FOR THE LUNDBY DAUGHTER

(Continued from page 10)



BOX C/DRESS
REFER TO PAGES 8-9

COMING NEXT

In *The Letter* for September 2009, our first online issue, the *CWL* will feature the *Son of the Lundby Family*. An interesting alternative to polymer clay, crafting tips, and links will also be given.

LINKS

Julie Plovnick, VT, sent us an excellent website for Lundby collectors:

<http://nedomanansk.aon.at>

The website belongs to *Sieglinde Normandasky, Austria*, and she has some interesting material on Lundby, Barton (Caroline's Home), and other 1/16th dollshouses.

SmallStuff, an online posting source for both sellers and collectors of miniatures, is primarily geared to the 1/12th world, however, 1/16th devotees will find considerable information of interest. Send an email to:

smallstuff-request@smallstuffarchives.com

Include "Help" in either the Subject or Message of your email. There have been reports that AOL users have had problems receiving the daily emails.

About.com has an online weekly newsletter for miniaturists:

<http://minatures.about.com>

Again, basically 1/12th in content, but it has many printables that can be adapted to 1/16th scale.

Sue joins me in wishing our Members a very pleasant Summer.

