



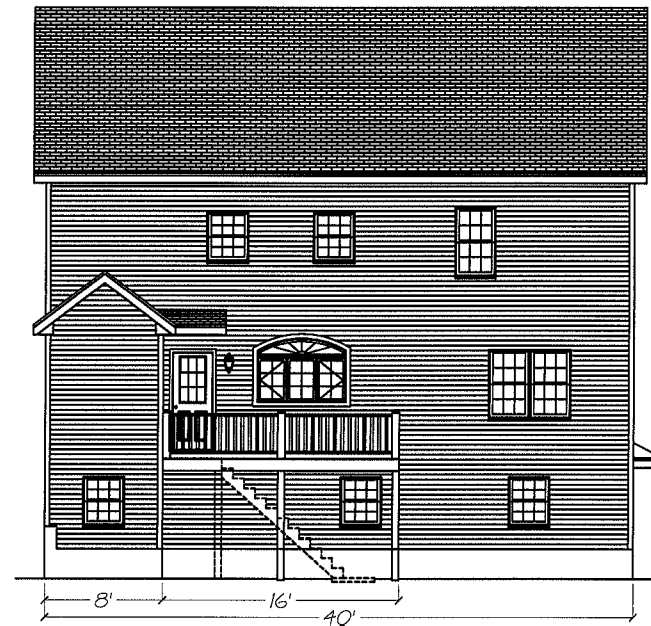
Left Elevation



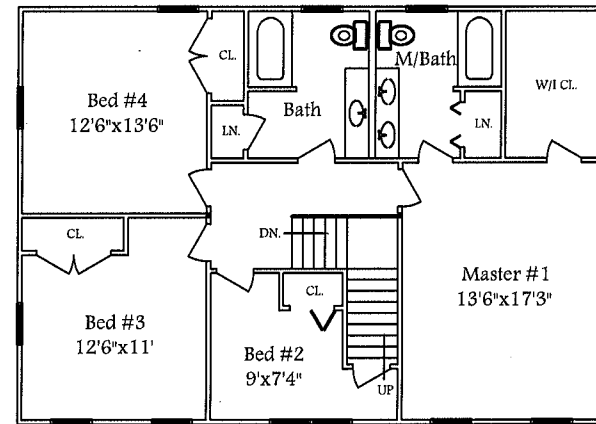
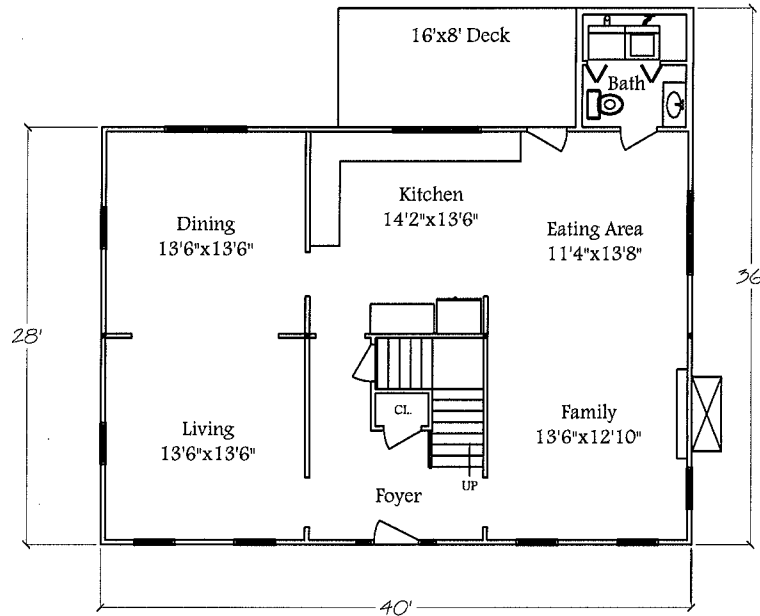
Front Elevation



Right Elevation



Rear Elevation



FEATURES	SQUARE FOOTAGE	CONSTRUCTION
Garage: 2 car under	Total Finished: 2304 Sq.Ft.	Foundation: Basement
Bedrooms: 4	1st Level Finished: 1184 Sq.Ft.	Exterior Walls: 2x6
Number of Baths: Full 1/2 3/4	2nd Level Finished: 1120 Sq.Ft.	1st Floor Ceiling Height: 8'
2 1 0	Attic Access Type: Walk up	2nd Floor Ceiling Height: 8'