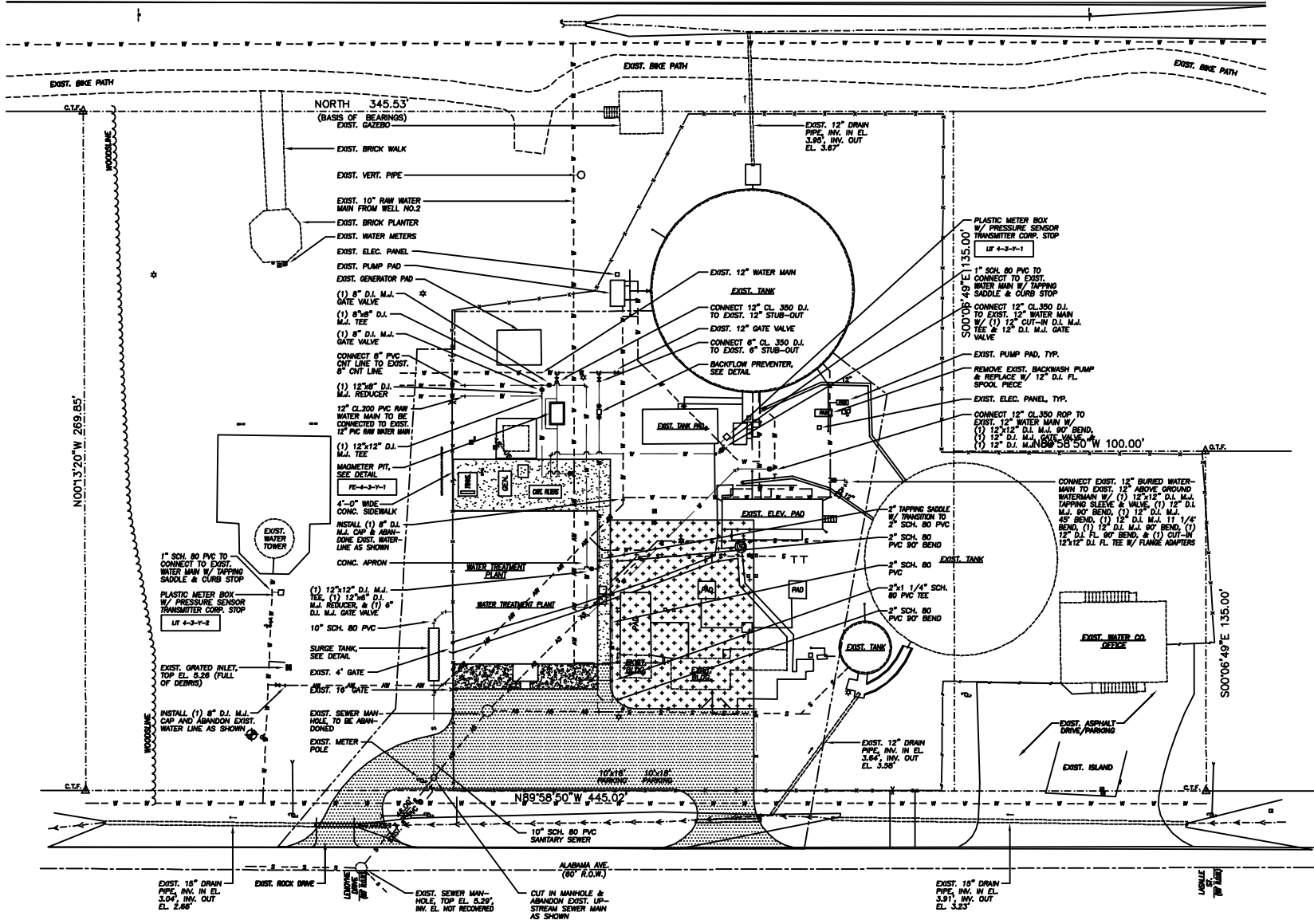


BIENVILLE BOULEVARD
(100' R.O.W.)



LEGEND

- C.T.F. EXIST. CRIMP TOP IRON FOUND
- C.L.S. EXIST. CAPPED STEEL ROD SET
- EXIST. POWER POLE & GUY WIRE
- EXIST. LIGHT POLE
- EXIST. CHAINLINK FENCE
- EXIST. WOOD FENCE
- EXIST. DRAINAGE FLOWLINE
- EXIST. WATER (ABANDON)
- EXIST. SEWER (ABANDON)
- EXIST. WATERLINE
- EXIST. SANITARY SEWER
- EXIST. SANITARY SEWER
- EXIST. TELEPHONE PEDESTAL
- EXIST. WATER METER
- EXIST. WATER VALVE
- EXIST. FIRE HYDRANT
- EXIST. FAUCET
- EXIST. SIREN POLE
- FUTURE PAVED PARKING
- CONCRETE
- ASPHALT PAVING
- LANDSCAPING
- SILT FENCE
- WATER MAIN
- SEWER MAIN

- NOTES:**
1. ALL BURIED JOINTS SHALL BE MECHANICAL JOINT W/ MEDIALUG RESTRAINING GLANDS.
 2. SEE SPECIFICATIONS FOR PIPING SCHEDULE.
 3. PIPING >2 LOCATED UNDER CONCRETE SLABS SHALL BE CONCRETE ENCASED, (SEE CONC. PIPE ENCASEMENT DETAIL).
 4. PRESSURE SENSORS (LIT 4-3-Y-1 & LIT 4-3-Y-2) REQUIRE 1\"/>

WATER PLANT SITE GRADING

SCALE: 1" = 20'-0"