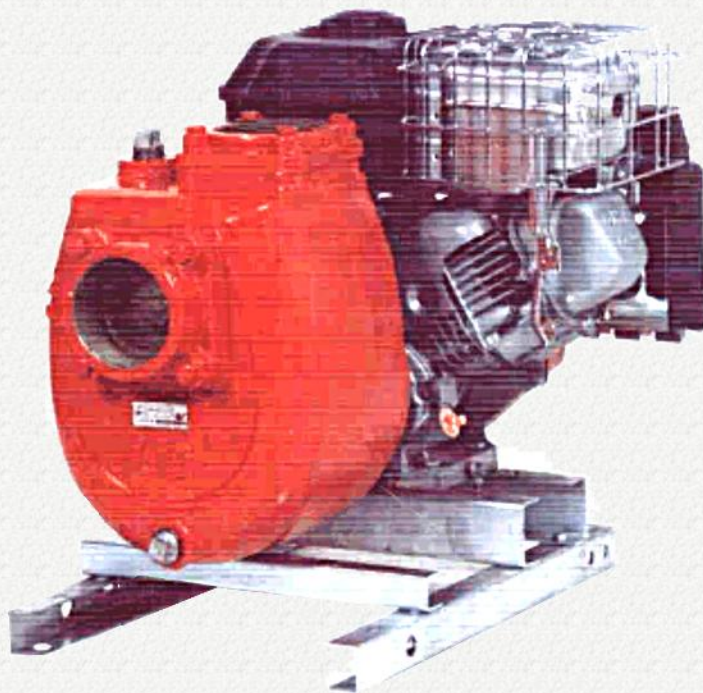


# GS Series

Engine Driven Self Priming Pumps- Cast Iron Construction



U.S. Fluid Tech Corp.

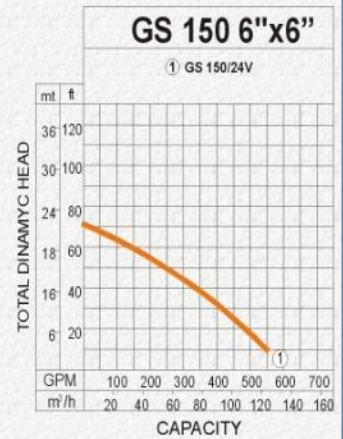
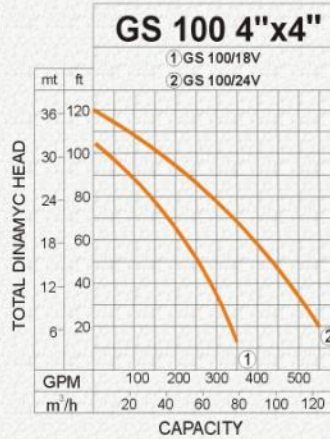
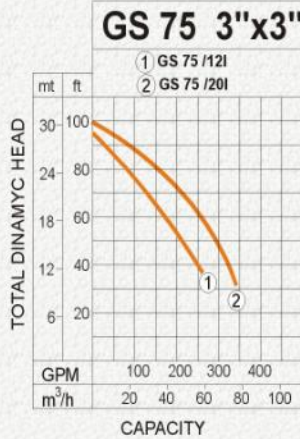
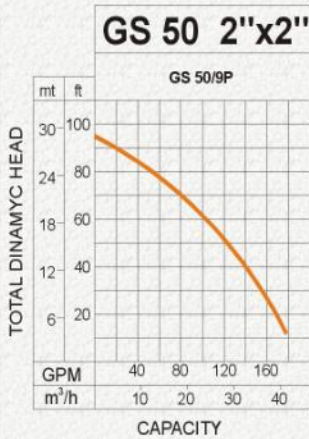
- ✓ Durable ASTM A-48 Cl.30 cast iron construction.
- ✓ Carbon-Ceramic and Buna-N mechanical seal for long life.
- ✓ Very simple to maintain.
- ✓ Briggs & Stratton engine shuts off automatically when oil level is low.
- ✓ Quick start engine.
- ✓ NPT threaded suction and discharge connections.

2", 3", 4" and 6" Centrifugal, Self Priming, Gas Engine

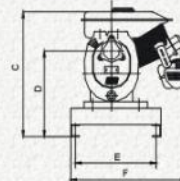
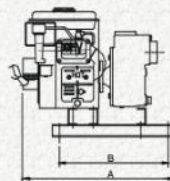
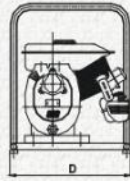
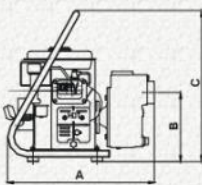
# Self Priming Pumps, Gas Engine

## U.S. Fluid Tech Corp.

### PERFORMANCE CURVES



### DIMENSIONS



MODEL	DIAM - NPT Suc X Dis	DIMENSIONS				WEIGHT lbs.	MOTOR HP		
		A	B	C	D				
GS 75/12I	3" x 3"	590	305	520	290	285	435	108	6.5
GS 75/20I	3" x 3"	590	305	520	290	285	435	128	8.0
GS 100/18V	4" x 4"	685	330	605	350	345	435	178	9.0
GS 100/24V	4" x 4"	715	330	635	355	345	435	185	13.0
GS 150/24V	6" x 6"	750	530	660	400	370	450	321	13.0

### SPECIFICATION

MODEL	GS 50/9P	GS 75/12I	GS 75/20I	GS 100/18V	GS 100/24V	GS 150/24V
Suction x Discharge	2"x2" NPT	3"x3" NPT	3"x3" NPT	4"x4" NPT	4"x4" NPT	6"x6" NPT
Total head Max. (ft)	95	95	98	105	120	71
Capacity Max. (gpm)	170	260	340	350	550	550
Impeller Type	semiopen					close
Shaft sleeve	Steel					
Mechanical Seal	3/4 Type 6	1.1/4 type21	1.1/4 type21	1.1/4 type21	1.1/4 type21	1.1/4 type21
Standard (mechanical Seal)	Carbon, Ceramic, Buna-N					
Spheres Max	5/8	3/4	3/4	7/8	7/8	7/8
Model	9 Plus	12 Intek	20 Intek	18 Vang.	24 Vang.	24 Vang.
Displacement	9.02 cu.in	12.6 cu. in	18.6 cu. In	18.06 cu.in	23.86 cu.in	23.86 cu.in
Output Max	3.5 @3600rpm	6.5 @3600rpm	8.0@3600rpm	9.0 @3600rpm	13 @3600rpm	13 @3600rpm
Type	Briggs & Stratton Air Cooled, 4 Stroke, Gasoline Engine					
Fuel	Automobile Gasoline					
Fuel Tank Capacity	4.0qt/3.8L	3.0qt/2.84L	4.0qt/3.78L	8.3qt/7.9L	8.3qt/7.9L	8.3qt/7.9L
Ignition System	Magnatron-Electronic					
Starting System	Recoil Starter					
Dimensions (LxWxH)	19"x19"x21"	26.4"x18"x20"		26.4"x18"x23.2"		41"x19.6"x32.2"
Weight net	75lbs	108lbs	128lbs	178lbs	185lbs	321lbs
Weight Gross	79lbs	115lbs	135lbs	185lbs	192lbs	330lbs

## Centrifugal, Self-Priming